

oxide

ermes aurelia

Riflessi metallici, decori anticonformisti, 6 colorazioni e 3 strutture diverse offrono un'infinità di soluzioni di posa da parete. Pavimenti coordinati.

Metal reflections with unorthodox decorations, six colors and three different textures offering a wide range of solutions for the walls. Matching floors available in four different colors that match the walls to give even more installation options.

Metallähnliche Reflexionen, aussergewöhnliche Dekorationen, 6 Farben in 3 verschiedenen Strukturen für zahllose Verlegelösungen im Wandbereich. Koordinierte Böden sind erhältlich.

Réflexions métalliques, décors anticonformistes, 6 couleurs et 3 différents structures offrent une multitude de solutions de pose au mur. Sols coordonnés.

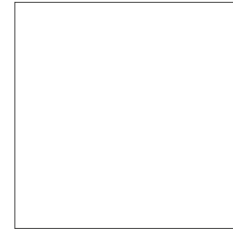
oxide





oxide

gres porcellanato
porcelain stoneware
feinsteingzeug
grès cérame

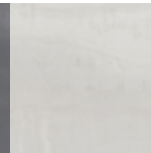


60x60
rettificato

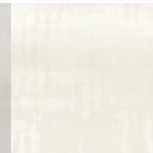
PLUMB



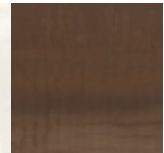
GREY



WHITE



RUST



oxide

GREY 60x60 rettificato

oxide

GREY 60x60 rettificato

oxide



WHITE 60x60 rettificato

oxide



WHITE 60x60 rettificato

oxide



PLUMB 60x60 rettificato

PLUMB



60x60
rettificato

37295

f40 | MQ

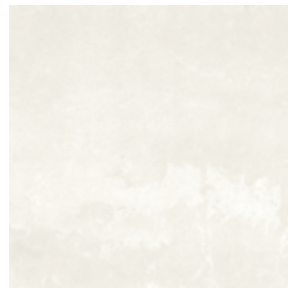
GREY



37294

f40 | MQ

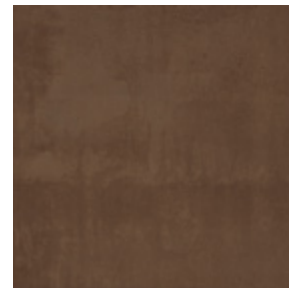
WHITE



37293

f40 | MQ

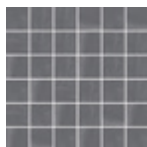
RUST



37296

f40 | MQ

MOSAICI . MOSAICS . MOSAIKEN . MOSAÏQUES



5x5 mosaico

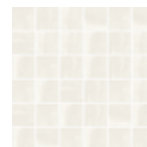
37351

i25 | MQ



37349

i25 | MQ



37348

i25 | MQ



37352

i25 | MQ

PEZZI SPECIALI
SPECIAL ITEMS
FORMSTÜCKE
PIÈCES SPÉCIALES



batiscopa
8x60

b10 | PZ

PLUMB	37355
GREY	37354
WHITE	37353
RUST	37356

IMBALLI E PESI

PACKING - WEIGHTS
VERPACKUNG - GEWICHT
EMBALLEGES - POIDS

	BOX		PALLET				
	mm	pcs	m ²	kg	box	m ²	kg
60x60 rett.	9,5	3	1,08	22,60	40	41,6	904
5x5 mosaico	-	9	0,81	17	-	-	-





oxide

rivimenti
wall tiles
wandfliesen
faïences

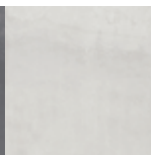


20x60

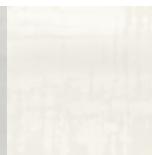
PLUMB



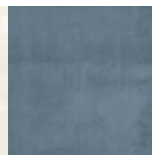
GREY



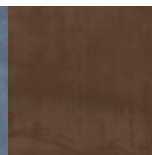
WHITE



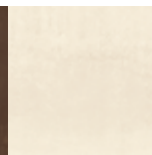
BLUE



RUST



BEIGE



oxide

decoro GRUNGE WARM 20x60
RUST 20x60



oxide



deco GRUNGE WARM 20x60

RUST 60x60 rettificato

oxide



BEIGE 20x60
struttura HEXAGON RUST 20x60

oxide



BEIGE 20x60

oxide

struttura BLADE BLUE 20x60
WHITE 20x40
deco GRUNGE COOL 20x60
BLUE 20x60

WHITE 60x60 rettificato



oxide

struttura BLADE BLUE 20x60
WHITE 20x60
deco GRUNGE COOL 20x60

oxide



struttura HEXAGON PLUMB 20x60
GREY 20x60
matita SATIN 0,8x60



oxide

struttura HEXAGON PLUMB 20x60

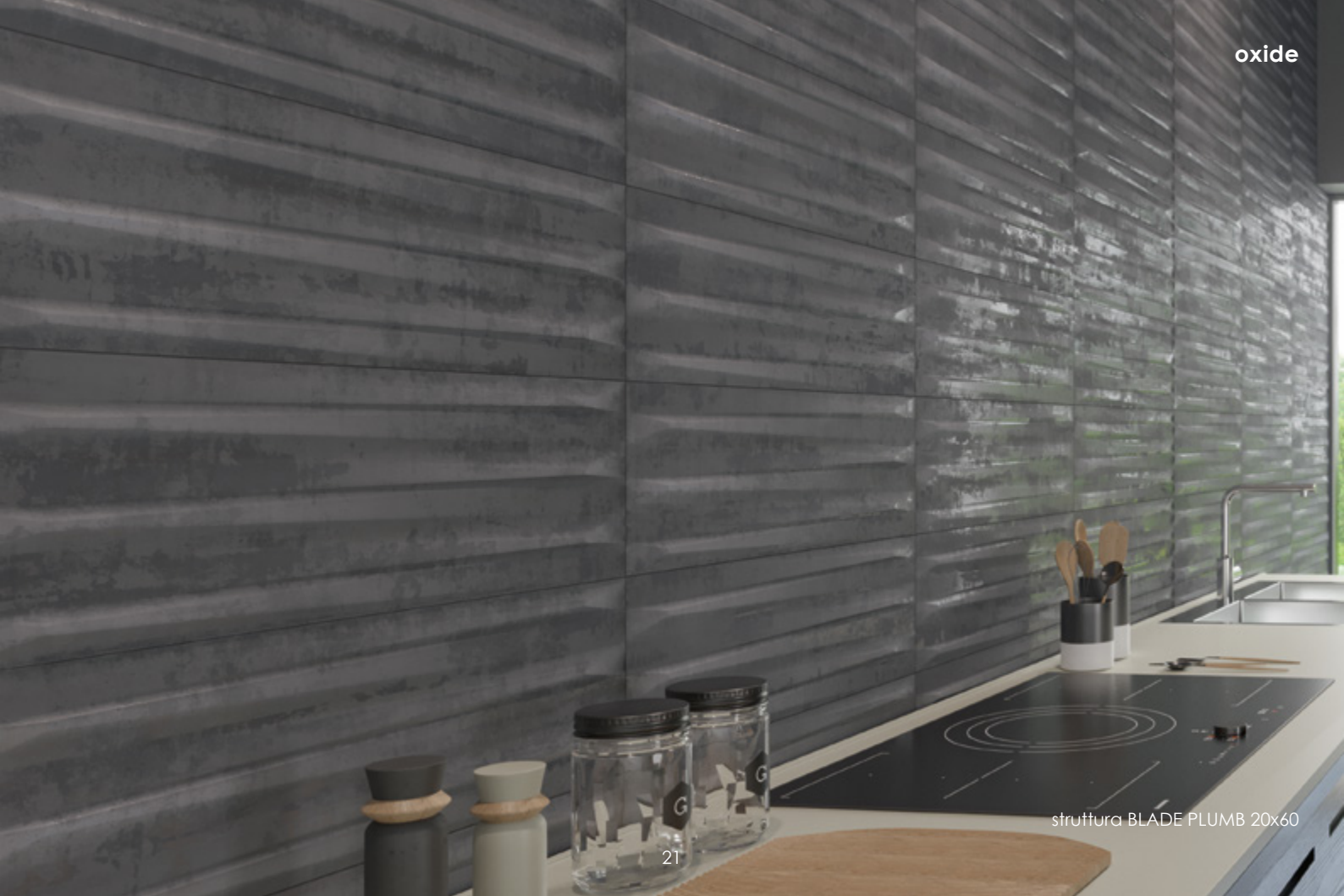
oxide



struttura BLADE PLUMB 20x60

GREY 60x60 rettificato

oxide



struttura BLADE PLUMB 20x60

PLUMB

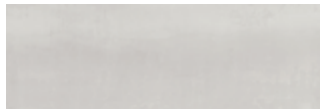


20x60

37301

e50 | MQ

GREY



37299

e50 | MQ

WHITE



37297

e50 | MQ

BLUE



37303

e50 | MQ



20x60

struttura BLADE

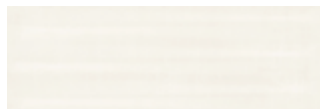
37307

e80 | MQ



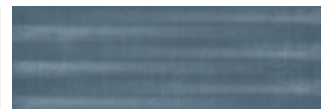
37306

e80 | MQ



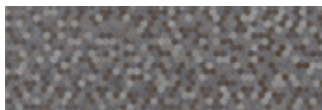
37304

e80 | MQ



37309

e80 | MQ



20x60

struttura HEXAGON

37315

e80 | MQ

DECORI . DECORATIVE MOTIF . DEKORE . DECORS



20x60

decaro GRUNGE COOL

37318

f20 | MQ



RUST



37302

e50 | MQ

BEIGE



37298

e50 | MQ



37308

e80 | MQ



37305

e80 | MQ



37316

e80 | MQ



37317

f20 | MQ



0,8x60
matita CORTEN

37357

d20 | PZ

0,8x60
matita SATIN

36943

d20 | PZ

20x60
decoro GRUNGE WARM

IMBALLI E PESI PACKING - WEIGHTS VERPACKUNG - GEWICHT EMBALLEGES - POIDS	✂	BOX			PALLET		
		mm	pcs	m ²	kg	box	m ²
20x60	8,0	12	1,44	19,50	56	80,64	1.092
20x60 struttura BLADE	8,0	10	1,20	19,50	56	67,20	1.092
20x60 struttura HEXAGON	8,0	12	1,44	19,50	56	80,64	1.092
20x60 decoro GRUNGE	8,0	12	1,44	19,50	56	80,64	1.092
0,8x60 matita CORTEN		8	-	-	-	-	-
0,8x60 matita SATIN		8	-	-	-	-	-

oxide



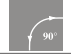
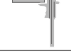










gres porcellanato
porcelain stoneware
feinsteinzeug
grès cérame



Classificazione secondo norme CEN gruppo B1a UNI EN 14411 App. G
Classification in accordance with CEN standards B1a UNI EN 14411 App. G
Klassifizierung gemäß CEN Normen Gruppe B1a UNI EN 14411 App. G
Classification selon les normes CEN groupe B1a UNI EN 14411 App. G

Caratteristiche tecniche
Caracteristiques Techniques
Technische Eigenschaften
Technical Features

	Proprietà fisico-chimiche Physical-chemical properties Fysisch-chemische Eigenschaften Propriétés physico-chimiques	Tipo di prova Standard of test Testnorm Norme du test	Valore prescritto Required value Vorgeschriebener Wert Valeur prescrite	Valore Ermes Aurelia Ermes Aurelia standards Ergebnis Ermes Aurelia Valeur Ermes Aurelia
	Lunghezza e larghezza Length and width Länge und Breite Longueur et largeur	UNI EN ISO 10545.2	± 0,6%	Conforme In accordance Erfüllt Conforme
	Ortogonalità Wedging Rechtwinkligkeit Orthogonalité	UNI EN ISO 10545.2	± 0,6%	Conforme In accordance Erfüllt Conforme
	Spessore Thickness Stärke Epaisseur	UNI EN ISO 10545.2	± 5%	Conforme In accordance Erfüllt Conforme
	Planarità Warpage Ebenförmigkeit Planéité	UNI EN ISO 10545.2	± 0,5%	Conforme In accordance Erfüllt Conforme
	Rettilineità spigoli Linearity Kantengeradheit Rectitude des arêtes	UNI EN ISO 10545.2	± 0,5%	Conforme In accordance Erfüllt Conforme
	Assorbimento d'acqua Water Absorption Wasseraufnahme Absorption d'eau	UNI EN ISO 10545.3	≤ 0,5%	Conforme In accordance Erfüllt Conforme
	Coefficiente di dilatazione termica lineare Coefficient of linear thermal-expansion Lineare Wärmeausdehnung Coefficient linéaire de dilatation thermique	UNI EN ISO 10545.8	-	7MK ⁻¹
	Resistenza a flessione Flexion Resistance Biegezugfestigkeit Résistance à la flexion	UNI EN ISO 10545.4	≥ 35 N/mm ²	Conforme In accordance Erfüllt Conforme
	Resistenza agli sbalzi termici Thermal shock resistance Temperaturwechselbeständigkeit Résistance aux écarts de température	UNI EN ISO 10545.9	Richiesta Required Requisit Erforderlich	Resistente Resistant Resistants Widerstandsfähig
	Resistenza al gelo Frost resistance Frostwiderstandsfähigkeit Résistance au gel	UNI EN ISO 10545.12	Richiesta Required Requisit Erforderlich	Resistente Resistant Resistants Widerstandsfähig
PEI	Resistenza all'abrasione superficiale Resistance to surface abrasion Widerstand gegen Hefenabrieb Résistance à l'abrasion superficielle	UNI EN ISO 10545.7	Secondo quanto dichiarato dal fabbricante As the manufacturer declaration Selon chiffre d'affaire déclaré par le fabricant Nach dem, was der Hersteller angegeben hat	Indicata sul catalogo Indicated on the catalogue Im prospekt angegeben Indique sur le catalogue
	Resistenza allo scivolamento Slip resistance Rutschfestigkeit Résistance à la glissance	DIN 51130		Indicata sul catalogo Indicated on the catalogue Im prospekt angegeben Indique sur le catalogue
		DCOF ANSI A137.1-2012	≥ 0,42 wet	Indicata sul catalogo Indicated on the catalogue Im prospekt angegeben Indique sur le catalogue

ermes aurelia

ermesceramichespa

via statale 467, n.171 . 42013 veggia (re) - italy . tel. +39 0536 991511 . fax +39 0536 824777
e-mail: info@ermes-ceramiche.it . www.ermes-ceramiche.it

